

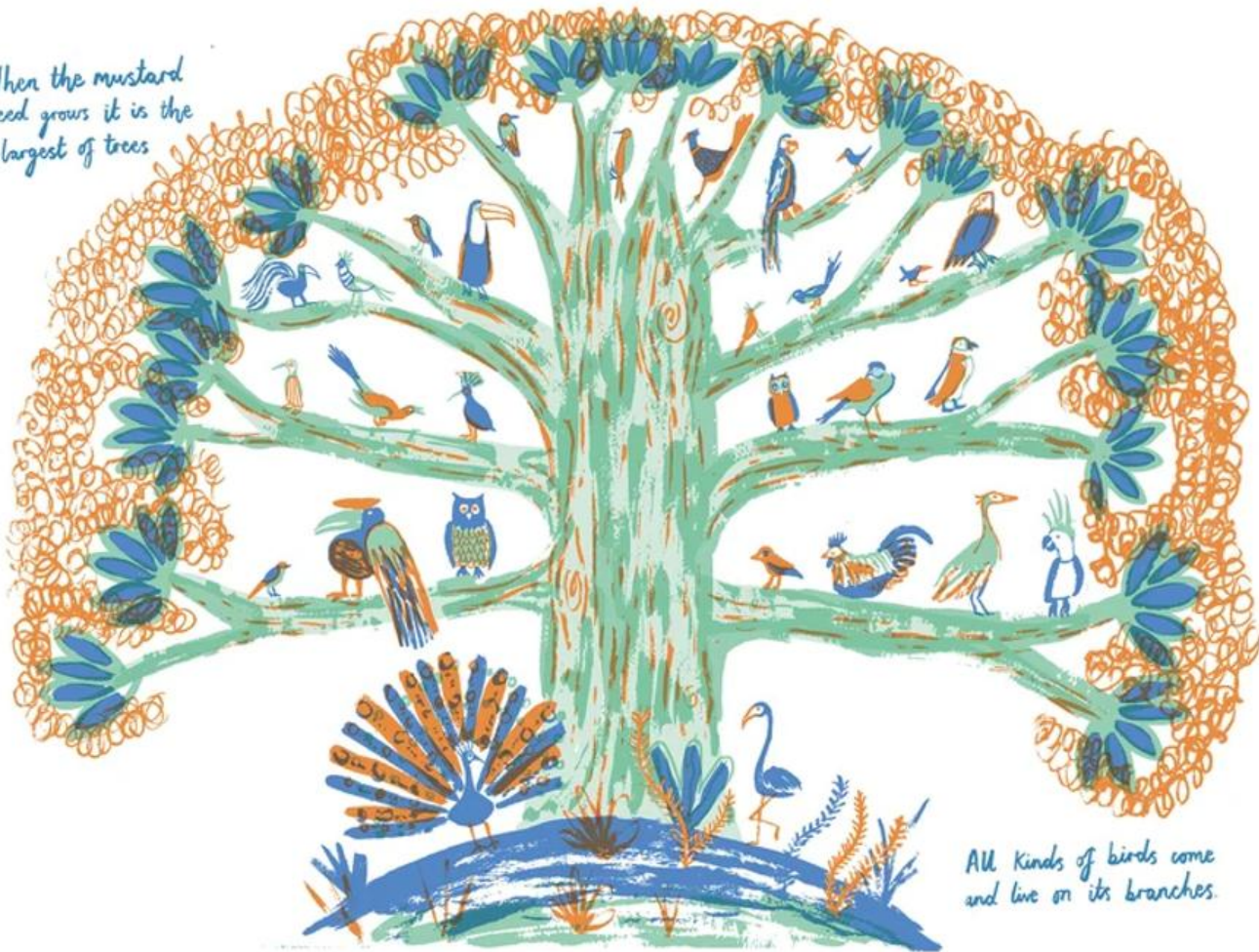
# Welcome to Year 2 Parent Information Presentation



*Nurtured we thrive*

September 2025

When the mustard  
seed grows it is the  
largest of trees



All kinds of birds come  
and live on its branches.

## **FORGIVENESS**

Letting go of  
negative feelings  
e.g. anger or blame

## **COMPASSION**

Love in action



## **JUSTICE**

Fairness

## **RESPONSIBILITY**

Doing the things we  
are supposed to do

# Meet the Team

## Purple Class

Mrs Prior - Class Teacher/Year Group Leader

Mrs Ayling – Teaching Assistant Tues-Fri

Mrs Soloman-Teaching Assistant Mon

## Green Class

Mrs Vadhia and Mrs Horne – Class Teachers

Mrs Harrington – Teaching Assistant

## Blue Class

Miss Killick – Class Teacher




Mrs Pearce – Teaching Assistant

Mr Pring – Headteacher

Mrs Pateman- Deputy Headteacher and SENDCO

# Introduction and General Expectations

- Structure of day in Year 2 and curriculum subjects.
- Independence and organisation (PE kit, jumpers/cardigans, reading books, water bottles and lunchboxes).

Monday	Tuesday	Wednesday	Thursday	Friday
				
				
				
				



# The Year 2 Curriculum

- We follow the National Curriculum in all subjects.
- For RE we use Kent Agreed Syllabus supported by the Canterbury Diocese.
- For Phonics and Spelling we use the Little Wandle phonics and reading scheme.
- For Maths we use White Rose.
- For Writing we use Pathways 2 Write.
- We will send you Curriculum Information each term.





# Homework

- Homework for the week will be sent out on Seesaw at the beginning of the week. We will be migrating to using DoodleLearning throughout the year. We will be providing further information about this before the migration.
- Currently, please complete homework and post on Seesaw, along with any relevant comments. Sometimes there will be a template to work on and then submit.
- Please try to encourage your child to be independent, with a little guidance from an adult.
- This will be looked at by your class teacher and responses will be sent on Seesaw.
- Please remember that Seesaw is a secure site so any information that you or we post is confidential.



# Homework Contd.

- Homework will usually reinforce work done in school the previous week, or it may be more general or revision of concepts the pupils need extra help with.
- When we migrate to DoodleLearning, the homework will be self-marking and it will be 'smart and interactive', meaning that it will constantly assess your child's individual progress and adjust the homework accordingly.
- We will continue to use Seesaw as our method of parent/school communication, even after the migration.





# Phonics / Spelling Homework

- Spellings will be sent home weekly, initially via Seesaw and then migrating to DoodleLearning.
- If there is a spelling rule for the week, this will be explained.
- A challenge is given for those who learn the words easily.
- Children will be checked on the words in school at the end of each term and will be expected to spell all of these words correctly in all of their writing.



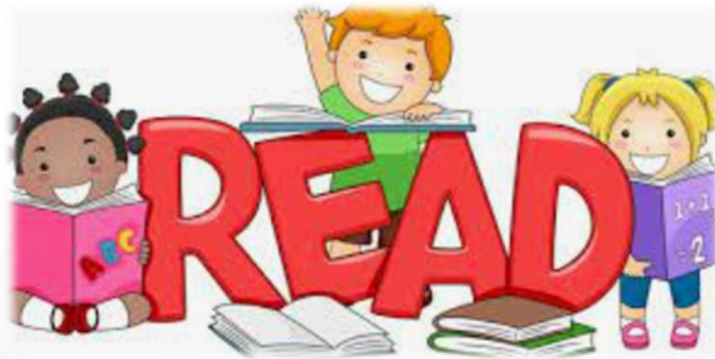
# Phonics / Spelling Homework

- We will also encourage pupils to learn the Common Exception Words each term – these should be learned and used correctly in all writing. They will be assessed randomly throughout the year.

Year 1 and 2 Common Exception Words											
Year 1						Year 2					
the	they	one	door	gold	glare	clothes					
a	be	once	floor	hold	path	busy					
do	he	ask	poor	told	both	people					
to	me	friend	because	every	hour	water					
today	she	school	find	great	move	again					
of	we	put	kind	break	prove	half					
said	no	push	mind	steak	improve	money					
says	go	pull	behind	pretty	use	Mr					
are	so	full	child	beautiful	sugar	Mrs					
were	by	house	children	after	eye	parents					
was	my	our	wild	fast	could	Christmas					
is	here		climb	lost	should	everybody					
has	there		mont	pent	would	even					
has	where		only	father	who						
I	love		both	class	whole						
you	come		old	grass	any						
your	some		cold	pet	many						

# Reading at Home

- As explained in the welcome message, reading books will come home on a Thursday, to be returned the following Wednesday.
- Children will bring two books each week.
- When reading with your child, please focus on both fluency and comprehension and remember to send us some feedback using the weekly Seesaw activity.



# Assessment in Year 2

- Assessment is continuous, based on Government guidelines of:
  - **Below the current Key Stage**
  - **Working Towards the Expected Standard**
  - **Working at the Expected Standard**
  - **Working at Greater Depth**
- 
- Each child has individual targets which they work towards, both small steps and end of year targets.
  - Expectations are very high but most children will reach the Expected Standard.
  - Targets and progress will be shared at Parent Consultations.



# End of Year Testing

*This is no longer statutory, but it does form a useful part of the assessment process.*

*Maths – Arithmetic and Reasoning papers*

*Reading – two reading comprehension papers*

*There is no separate Writing paper.*

The final assessment given is a Teacher Assessment based on a combination of test results and general work in school over the whole year.

# Phonics Screening

- Any child that did not meet the benchmark for the Year 1 Phonics screening check will retake this in June 2026.
- The assessment comprises 40 words which the children need to read aloud.
- The purpose is to ensure children can segment and blend one, two and three syllable words.





# Any Questions?

- Thank you very much for joining us.
- Please send any further questions on Seesaw and we will do our best to answer them.
- Please come and introduce yourself to us at the end of school one day so that we can recognise you at the gate.

